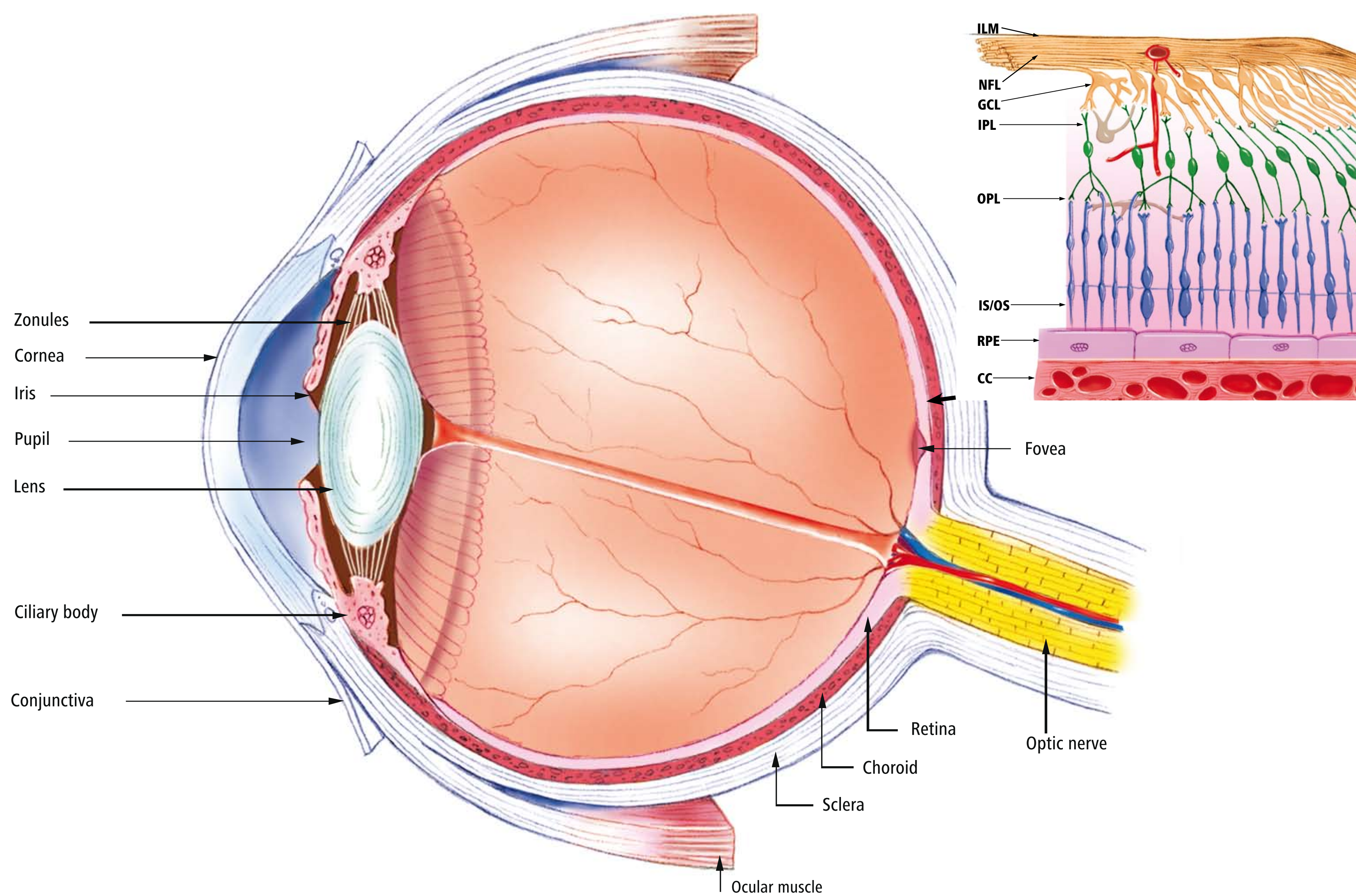
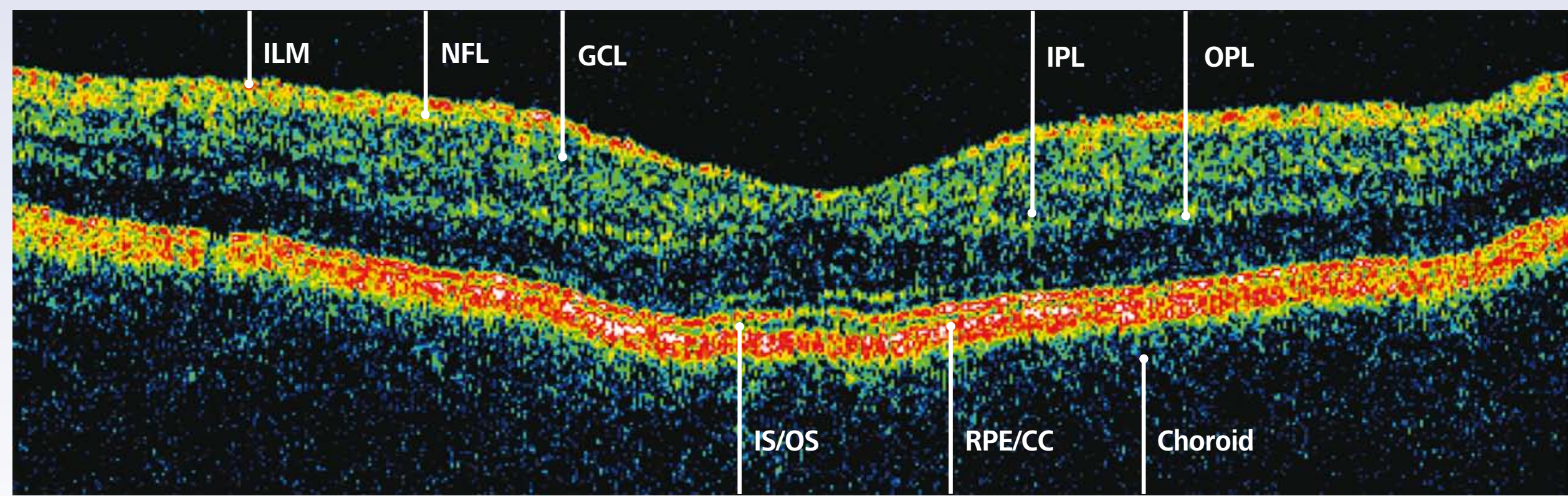


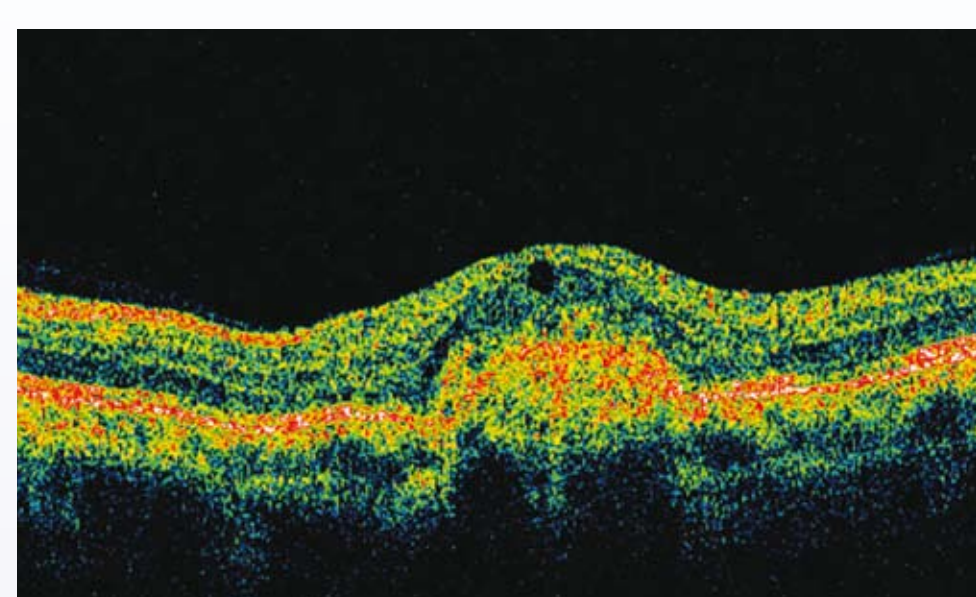
Direct Cross-Sectional Retinal Imaging

Stratus OCT™ Image of Normal Retinal Layers

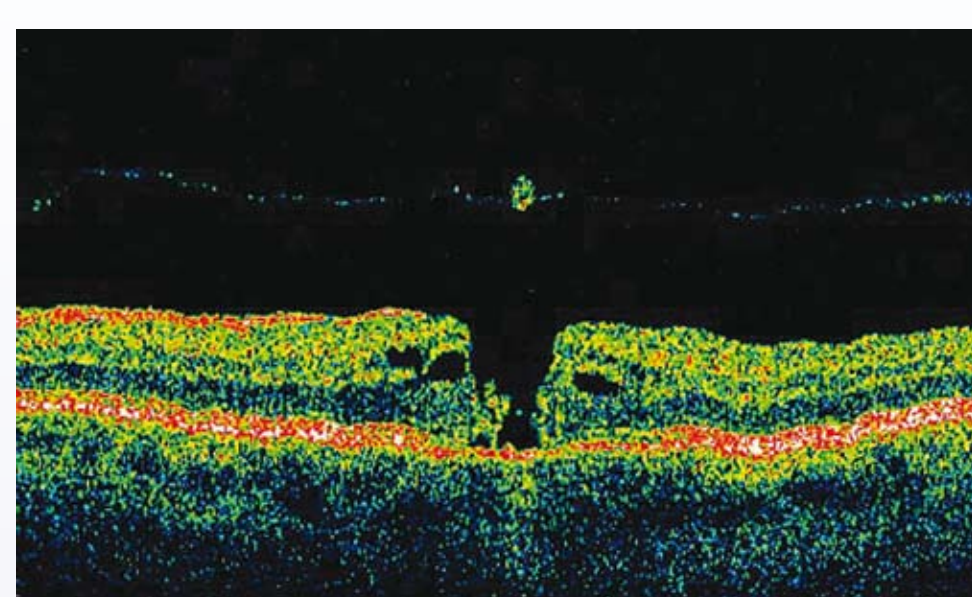
- ILM:** Inner Limiting Membrane
- NFL:** Nerve Fiber Layer
- GCL:** Ganglion Cell Layer
- IPL:** Inner Plexiform Layer
- OPL:** Outer Plexiform Layer
- IS/OS:** Junction of Inner and Outer Photoreceptor Segments
- RPE/CC:** Retinal Pigment Epithelium/Choriocapillaris



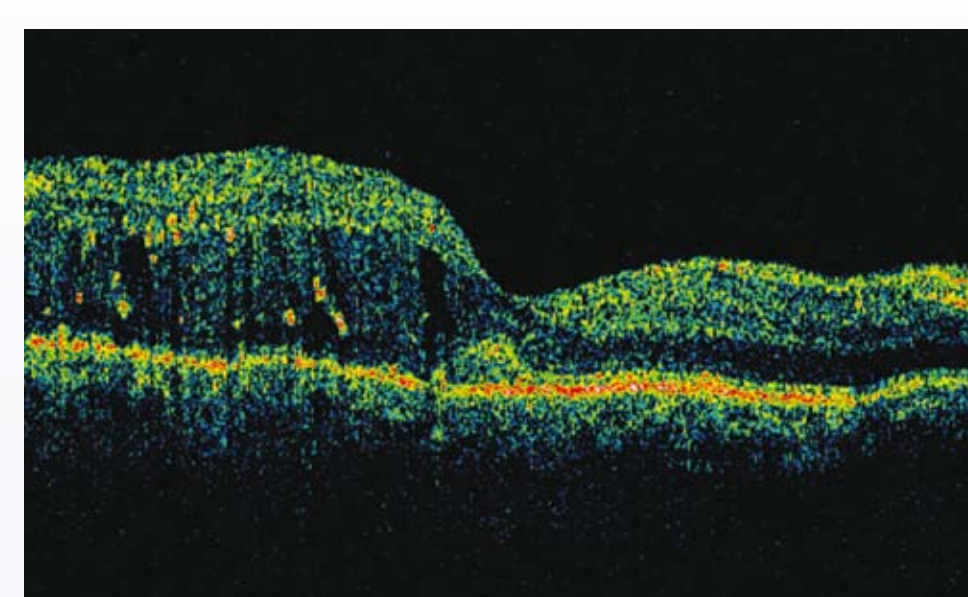
Stratus OCT™ Images of Retinal Pathology



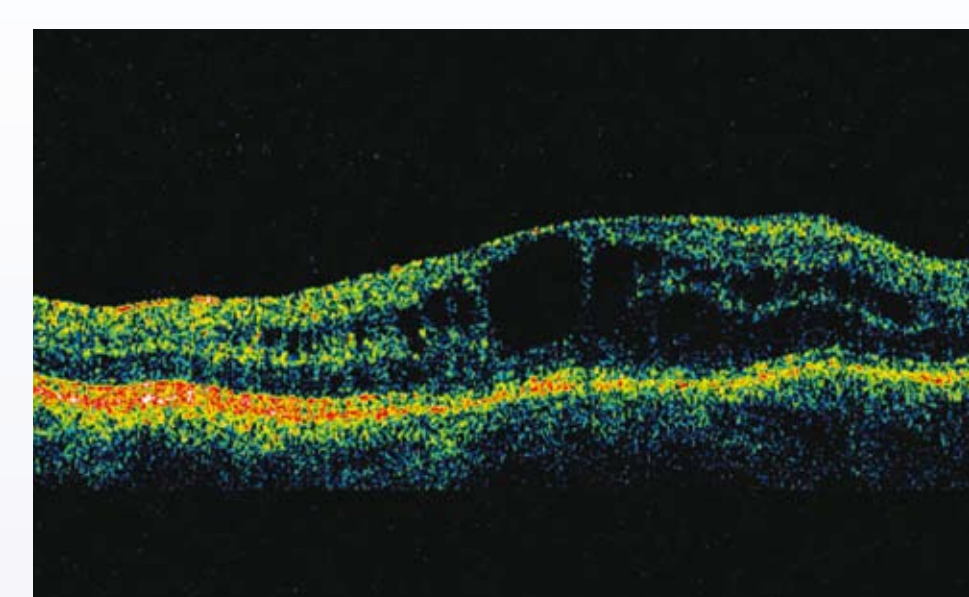
Age-Related Macular Degeneration¹



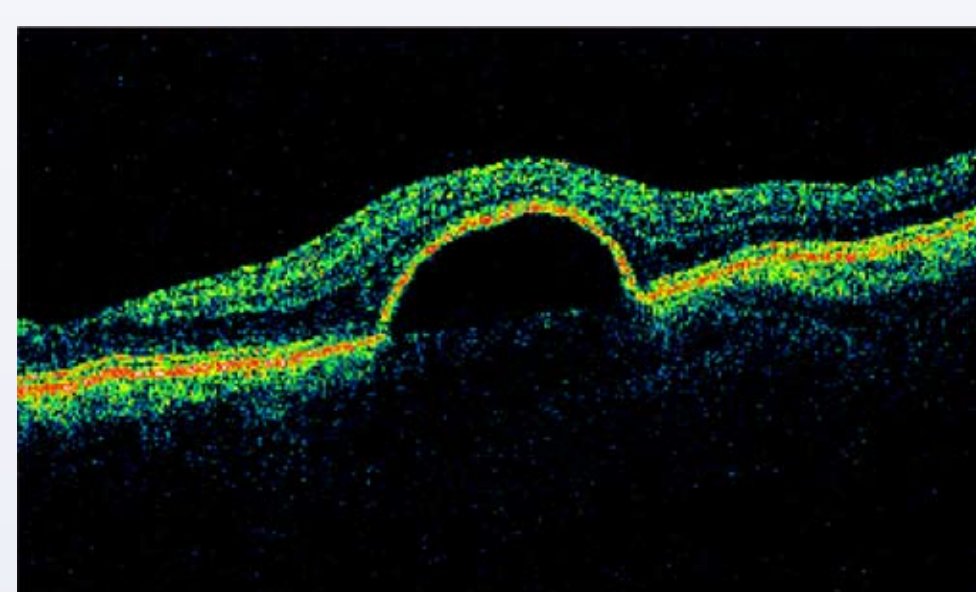
Macular Hole with Operculum and Posterior Vitreous Detachment²



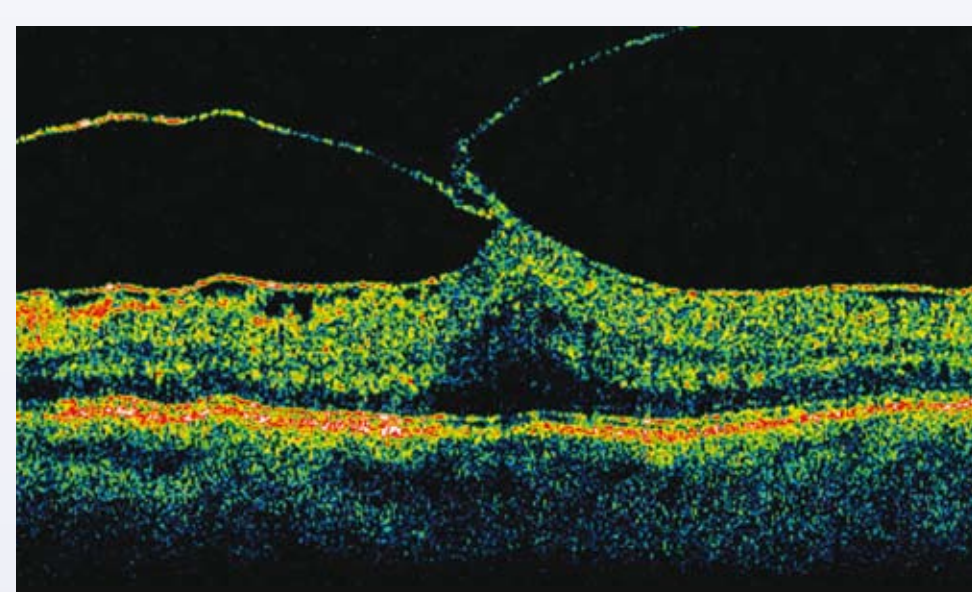
Diabetic Macular Edema³



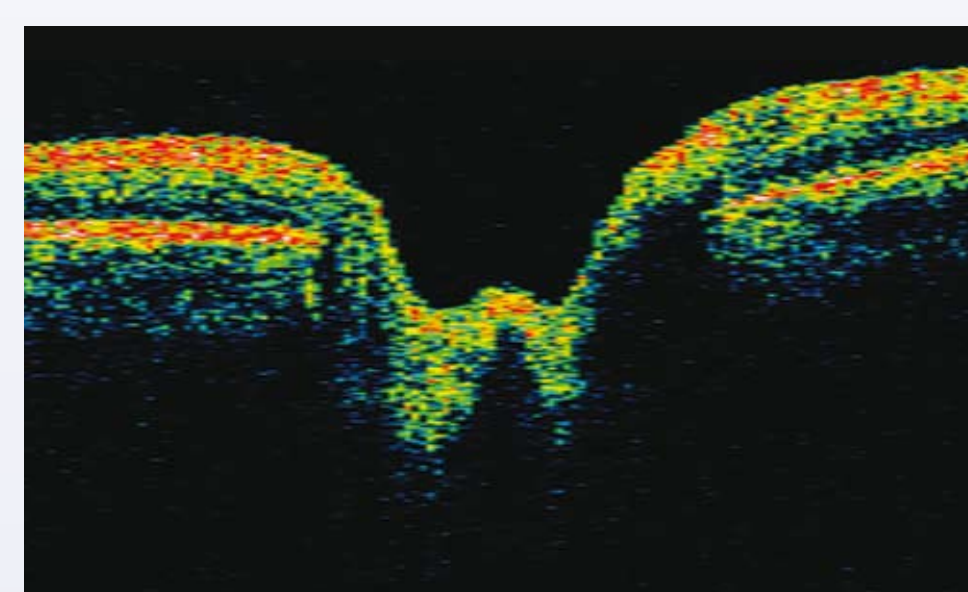
Cystoid Macular Edema⁴



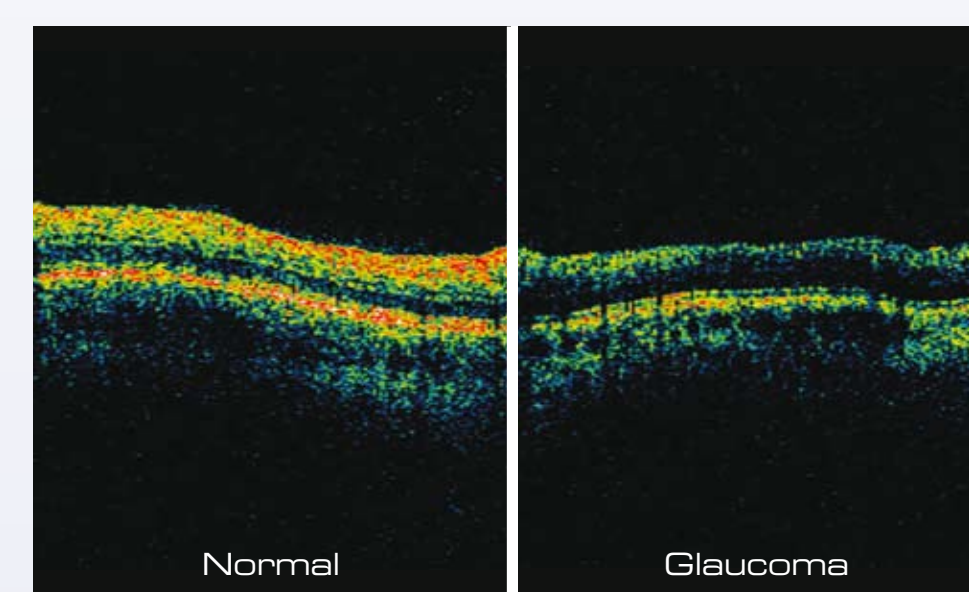
Pigment Epithelial Detachment⁵



Epiretinal Membrane with Vitreo-Macular Traction⁶



Glaucomatous Cupping⁷



Retinal Nerve Fiber Layer Loss⁸

Publications: 1. 000000-1378-146. Specifications subject to change without notice. ©2019 Carl Zeiss Meditec, Inc. All rights reserved. Printed in Germany. 2. Kulkarni S, Saffar C, et al. Retinal Nerve Fiber Layer Thickness and Macular Hole Closure. 3. Kulkarni S, Saffar C, et al. Retinal Nerve Fiber Layer Thickness and Macular Hole Closure. 4. Kulkarni S, Saffar C, et al. Retinal Nerve Fiber Layer Thickness and Macular Hole Closure. 5. Baudouin P, et al. Retinal Nerve Fiber Layer Thickness and Macular Hole Closure. 6. Elton Young, M.D., Duke University Eye Center. 7. Kulkarni S, Saffar C, et al. Retinal Nerve Fiber Layer Thickness and Macular Hole Closure. 8. Kulkarni S, Saffar C, et al. Retinal Nerve Fiber Layer Thickness and Macular Hole Closure.

